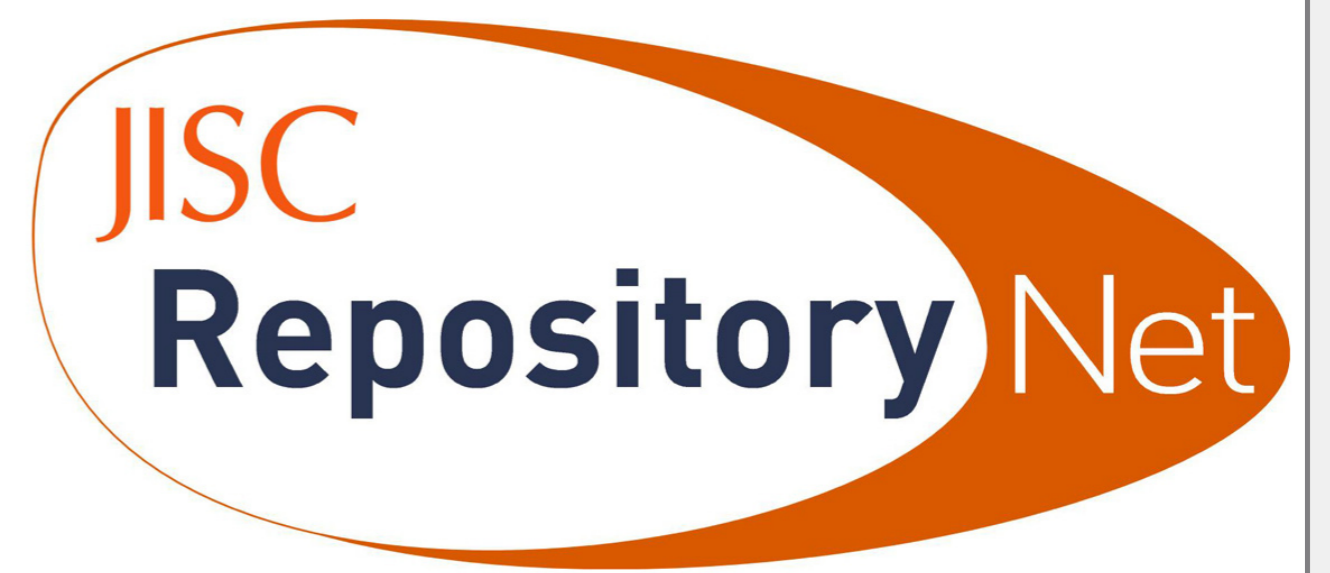
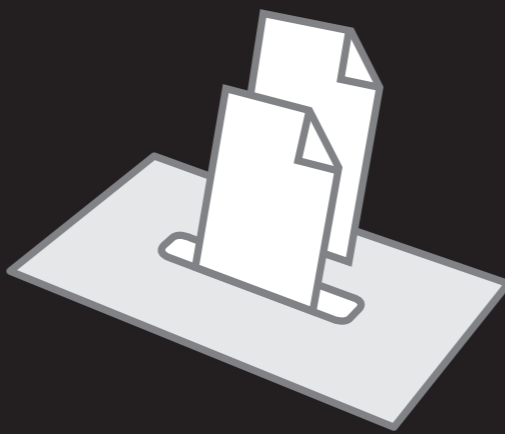


# Put it in The Depot...



## Overview

The Depot facility (<http://depot.edina.ac.uk>) is based on E-Prints software and is OAI-compliant. Like other UK repositories, its contents will be harvested and searched through the Intute Repository Search project. It offers a redirect service, nicknamed UK Repository Junction, to ensure that content that comes within the remit of an extant repository is correctly placed there instead of in the Depot.

Additionally, as IRs are created, the Depot will offer a transfer service for content deposited by authors based at those universities, to help populate the new IRs. The Depot will therefore act as a 'keepsafe' until a repository of choice becomes available for deposited scholarly content. In this way, the Depot will avoid competing with extant and emerging IRs while bridging gaps in the overall repository landscape and encouraging more open access deposits.

## About Repository Junction

At reception, on the Depot homepage, there is necessary facility to establish the identity of the potential depositor and what is being brought for deposit. This also provides the opportunity for the Depot to operate a re-direct service whereby those from universities that already have a suitable repository are automatically linked to the home page for that institutional repository.

Similarly, if the potential depositor has something other than an eprint, links to a range of appropriate repositories and archives will be on offer. This first part of the operation of the Depot we have nicked-named *Repository Junction*; it uses OpenDOAR as an information source.

## Background

In 2006 JISC funded the EDINA national data centre (University of Edinburgh) and SHERPA (University of Nottingham) to work together to scope provision for a short to medium term repository service to take deposit of peer-reviewed research outputs from any UK academic author without access to an IR at their own university. Under the name of Prospero, a draft scoping paper with implementation recommendations was produced: <http://edina.ac.uk/projects/prospero/ScopingReport.pdf>

In 2007 the partners were asked by JISC to provide the proposed facility for deposit of postprints and to work with other JISC *RepositoryNet* partners on promotion and advocacy to would-be depositors and institutions considering setting up their own IRs. *RepositoryNet* refers collectively to the supporting services of the Repository and Preservation Programme:

- the Depot
- Intute Search
- Repositories Support Project (RSP)
- Repositories Research Team (RRT)

### Prospero Scoping Report (2006)

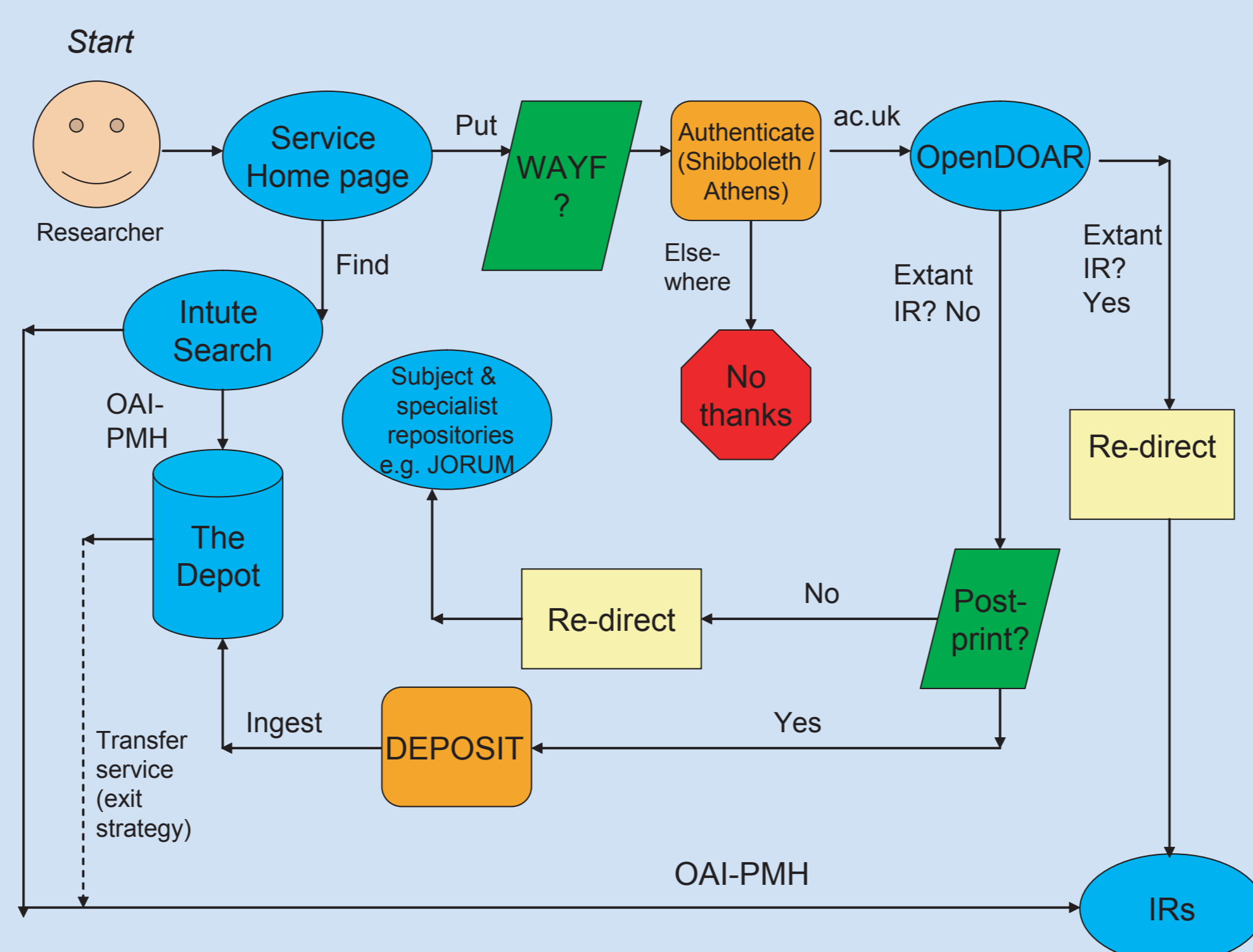
#### Table of Contents

Summary of questions and recommendations.....	3
<b>I. Introduction (EDINA) .....</b>	<b>6</b>
i. Sketch of proposed 'Repository Junction'.....	6
ii. Outcome of Stakeholder Requirements	
scoping work.....	8
Transfer service & exit strategy .....	11
<b>II. Environmental Topics (SHERPA).....</b>	<b>12</b>
1. Academic work flows .....	12
2. Market analysis.....	14
3. Advocacy and liaison .....	16
<b>III. Topics on Rights &amp; Responsibilities in Open Access Context (EDINA) .....</b>	<b>19</b>
4. Versions & version control.....	19
5. Licensing and other legal issues .....	23
6. Authentication and authorisation issues.....	30
<b>IV. Operational Topics (EDINA) .....</b>	<b>35</b>
7. Software selection.....	35
8. OAI Reference Model and digital preservation .....	38
9. Subject classification.....	40
10. Metadata .....	41
11. Document types and file formats .....	43
<b>V. Acknowledgements .....</b>	<b>46</b>
<b>VI. References .....</b>	<b>46</b>
<b>Appendices .....</b>	<b>46</b>
1. Current Institutional Repositories in the UK.....	48
2. Current subject-specific or departmental repositories in the UK.....	50
3. Other repositories in the UK - project-based or not institutionally specific .....	51
4. Charles Oppenheim's inventory of legal issues associated with e-prints .....	52

## Ingest Service

The main objective of the Depot is ingest of post-prints into its repository. Here the intention is to expose that content under Open Access, via use of OAI-PMH, to other search facilities, such as Intute. Acting as a 'host', the Depot will have a stated 'take down and put back' policy, and should operate as a trusted repository, where persistence is desired as a quality of the object and of references made to the object, even - or perhaps especially - as the repository function might not persist.

## Repository Junction



## Transfer Service

The third objective of the Depot is the planned transfer of its content to the newly-emerging institutional repositories, having notified the relevant institution as and when a deposit was first made from someone from that institution.

Accordingly the exit strategy is to plan for the retreat of service, and transfer of content to a network of well-established institutional repositories.